
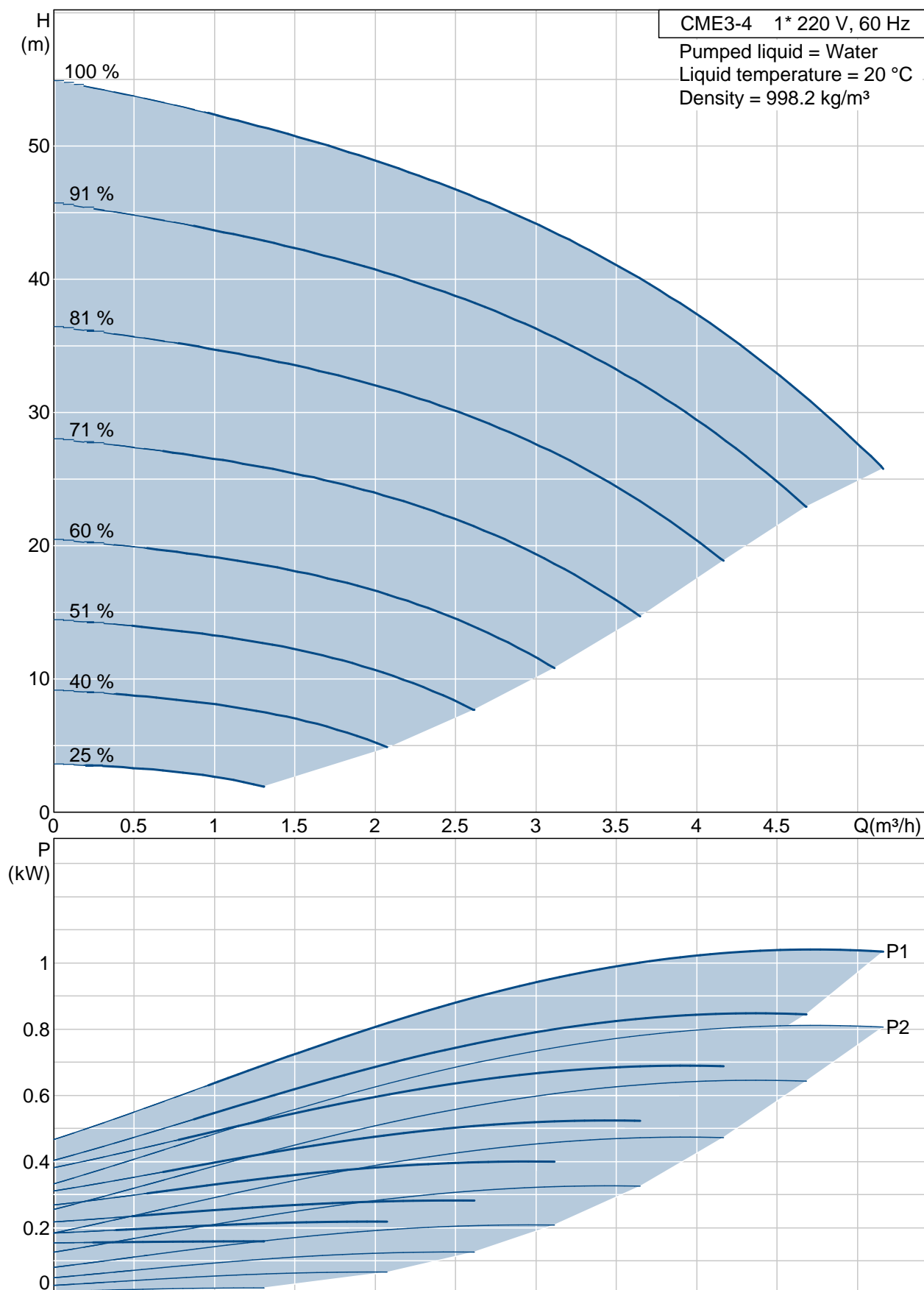
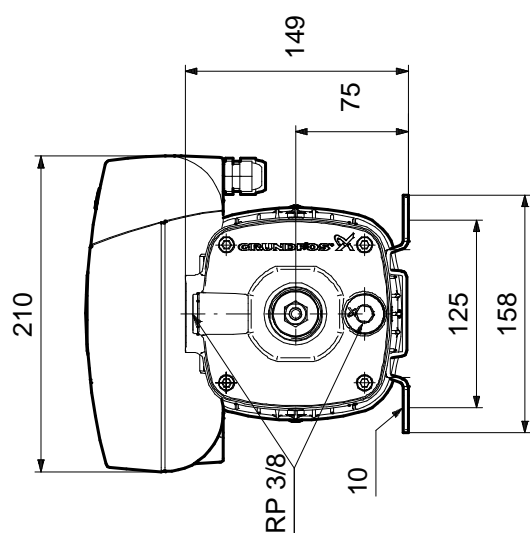


Position	Qty.	Description	Single Price
	1	<p>CME3-4 A-R-A-E-AVBE</p>  <p>Note! Product picture may differ from actual product</p> <p>Product No.: 96806928</p> <p>CME is a compact horizontal multistage centrifugal pump, close-coupled with a: 1-phase, 200-240 V, 60 HzHz. Foot mounted E-motor. The CME motor includes frequency converter and PI-controller integrated in the motor terminal box. No additional motor protection is required as both motor and electronics are protected by integrated overload and temperature protection. The pump is with axial suction port and radial discharge port including a special designed mechanical shaft seal in the solution AVBE. Shaft, impellers, chambers and filling plugs are made of stainless steel. Suction and discharge are made of Cast iron.</p> <p>The CM can also operate as a CME by connecting the motor to a CUE. Please find more information in the CUE part of Win/WebCAPS.</p> <p>An external sensor can be connected if controlled pump operation is required for: -flow -differential pressure -temperature control Sensor kits are available as accessories.</p> <p>The pump is equipped with a control panel that enables setting of: -Required set-point -Min. -Max. -Stop. The control panel has indicator lights for "Operation" and "Fault".</p> <p>Communication with the pump is possible by means of Grundfos R100 remote control enabling further settings as well as reading out of a number of parameters such as : -Actual value -Speed -Power input -Power consumption</p> <p>The terminal box holds terminals for the connection of:</p> <ul style="list-style-type: none"> - External start/stop (potential-free contact) - External remote setpoint setting via analog signal, 0 - 10 V, 0(4) - 20 mA, - 10 V voltage supply for setpoint potentiometer, I_{max} = 5 mA, - sensor, 0 - 10 V, 0(4) - 20 mA, - 24 V voltage supply for sensor, I_{max} = 40 mA, - input for forced control to MIN, MAX, External fault or Flows witch (potential-free contact) - potential-free fault signal relay with changeover contact, 	Price on request

Position	Qty.	Description	Single Price
		<p>- RS485 GENIbus.</p> <p>Liquid: Liquid temperature range: -20 .. 90 °C Liquid temp: 20 °C Density: 998.2 kg/m³</p> <p>Technical: Speed for pump data: 3480 rpm Actual calculated flow: 3.7 m³/h Resulting head of the pump: 39.7 m Shaft seal: AVBE Maximum operating pressure: 10 bar Approvals on nameplate: CE,WRAS,ACS</p> <p>Materials: Pump housing: Cast iron EN-JL1030 AISI 30 B Impeller: Stainless steel DIN W.-Nr. 1.4301 AISI 304 Rubber: EPDM</p> <p>Installation: Maximum ambient temperature: 40 °C Maximum operating pressure: 10 bar Max pressure at stated temp: 6 bar / 90 °C 10 bar / 40 °C Flange standard: WHITWORTH THREAD RP Pump inlet: Rp 1 Pump outlet: Rp 1</p> <p>Electrical data: Rated power - P2: 1.1 kW Mains frequency: 60 Hz Rated voltage: 1 x 200-240 V Rated current: 8,20-6,80 A Rated speed: 430-3400 rpm Enclosure class (IEC 34-5): 55 Insulation class (IEC 85): F</p> <p>Others: Net weight: 17.3 kg Gross weight: 20.8 kg</p>	

96806928 CME3-4 60 Hz





Printed from Grundfos CAPS