



Compact wall hung
gas boilers

METROPOLIS DGT



sime[®]



METROPOLIS DGT

The small from the great performances

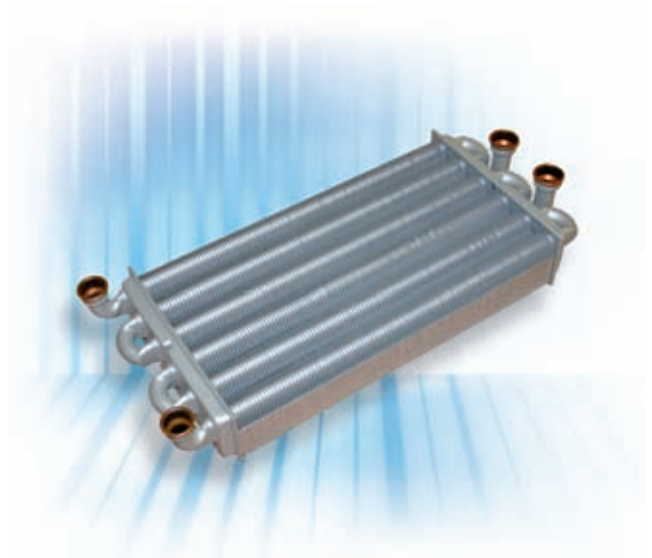
The **Metropolis DGT** is Sime's very latest compact wall hung gas boiler for central heating and the D.H.W. production, ideal for whom looks and great performances but in a small space are important. In particular, the compact dimensions allow easy fitting into kitchen furniture, as well as easy maintenance in the narrowest spaces.

The high technical specifications, the elegant design and the facility of use assure the best of Sime's quality for the modern installations. **Metropolis DGT** comply with the European Directives Gas EEC 90/396, Electromagnetic Compatibility 2004/108/CE, Low Tension 2006/95/CE and Efficiency EEC 92/42.

Simply and reliable

The compact dimensions of **Metropolis DGT** (depth reduced of 5 cm compared to the previous model) mean it can easily fit into a kitchen cupboard and be serviced even in restricted spaces. Bithermal heat exchanger definitely reduces the deposits on sanitary equipment, removes unreliable critical components (spiral heat exchanger and switch valve) and allows an easy layout in the boiler. Moreover, it helps the access and guarantees a simple maintainability.

The flowmeter on the sanitary side allows to maintain the temperature.



Functional and technological

Metropolis DGT control board is both functional and technological. For the first time, Sime adopts capacitive keys, that is to say, electric devices, able to recognize a nearby finger.

Moving mechanical parts are so removed and the

panel is watertight (the boiler has actually reached the protection level IPX5D). Easy and intuitive controls really simplify the usage, the LCD display and coloured leds immediately show the main information and possible working defects.



List of functions/instruments

- ▶ 1 LCD display
- ▶ 2 Red led: boiler in allarm
- ▶ 3 Green led: ok key
- ▶ 4 Function selector (on, off, summer, winter, boiler reset)
- ▶ 5 D.H.W. temperature control
- ▶ 6 C.H. temperature control
- ▶ 7 Change parameters
- ▶ 8 Installer menu parameters shift

Highly concentrated performance

Metropolis DGT is a high performance boiler. It comes equipped with an automatic pilot light ionisation ignition, electronic circuit board to continuously vary the heating and production of hot water, and anti-freeze system which activates at 6°C via an NTC sensor.

If coupled with the external probe, it can adjust the temperature, reducing the working costs of the heating plant.

All versions, equipped with a special kit, perfectly match a heating system with solar arrays.

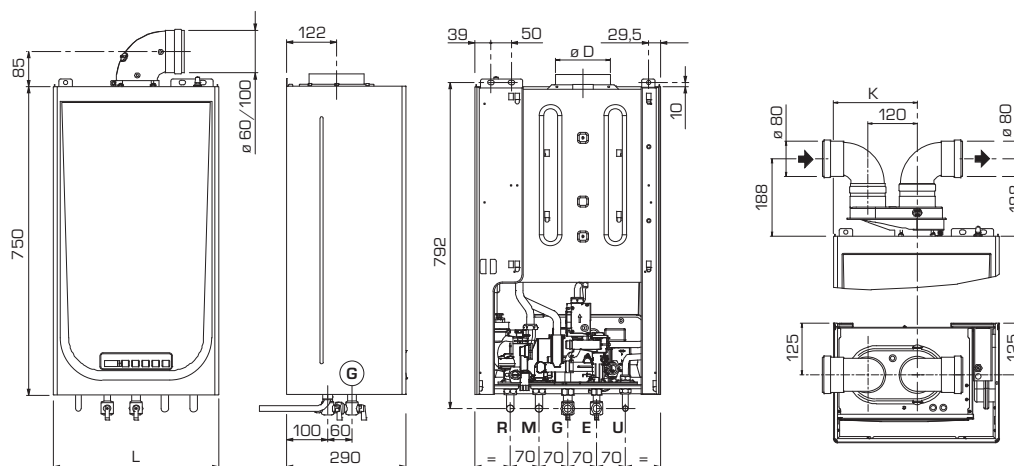
The solar kit is composed by a thermostatic mixer valve and by a temperature controller probe NTC. It compares the sanitary water temperature coming from solar storage, with the one laid on the sanitary potentiometer.

The boiler starts only if the temperature of the solar boiler is lower than the temperature laid in the boiler.

Technical features

		Open combustion chamber		Sealed combustion chamber	
		25 OF	25 BF	25 BF	30 BF
Heat output					
Nominal	kW (kcal/h)	22,8 (19.600)	23,7 (20.400)	28,0 (24.000)	
Minimum	kW (kcal/h)	8,5 (7.300)	7,5 (6.450)	9,0 (7.750)	
Heat input nominal					
	kW	25,0	25,5	30,0	
Efficiency rating at nominal heat input					
	%	91,3	93,0	93,3	
Efficiency rating at 30% of nominal heat input					
	%	89,9	92,0	92,0	
Energy efficiency (EEC Directive 92/42)					
		★ ★	★ ★ ★	★ ★ ★	
Water content					
	litres	1,0	1,0	1,0	
Maximum water head					
	bar	3	3	3	
Electrical power consumption					
	W	85	110	115	
Electrical protection grade					
		IPX4D	IPX5D	IPX5D	
Expansion vessel water content					
	litres	6	6	6	
Expansion vessel preloading pressure					
	bar	1,2	1,2	1,2	
Specific D.H.W. flow rate (EN 625)					
	litres / min	10,9	11,3	13,0	
Continuous D.H.W. flow rate Δt 30°C					
	litres / min	10,9	11,3	13,4	
Minimum D.H.W. flow rate					
	litres / min	2,0	2,0	2,0	
Minimum/Maximum D.H.W. pressure					
	bar	0,2/7	0,2/7	0,2/7	
C.H. setting range					
	°C	40÷80	40÷80	40÷80	
D.H.W. setting range					
	°C	30÷60	30÷60	30÷60	
Max. horizontal length of coaxial flue duct ø 60/100					
	m	-	3,5	3,0	
Max. horizontal length of coaxial flue duct ø 80/125					
	m	-	6	6	
Max. horizontal length of twin flue ducts					
	m	-	15+15	12+12	
Weight					
	kg	26	30	31	

Dimensional details - Hydraulic connections



Dimensions

	L mm	K mm	D mm
25 OF	450	-	130
25 BF	400	203	-
30 BF	450	221	-

Connections

M	C.H. flow	3/4"
R	C.H. return	3/4"
G	Gas connection	3/4"
E	D.H.W. inlet	1/2"
U	D.H.W. outlet	1/2"

Technical features and safety devices

	OF	BF
Circulating pump with c/w air separator	▲	▲
Bithermal heat exchanger	▲	▲
Differential pressure switch guaranteeing functioning of the flueing system		▲
3 bar safety valve	▲	▲
Automatic/manual by-pass on the C.H. circuit	▲	▲
Chimney sweep function allowing an easy maintenane and combustion analisys operations	▲	▲
Water pressure switch	▲	▲
Flowmeter	▲	▲
Smokes stat	▲	▲
Matchable with remote control CR63 e CR73	▲	▲

We pursue a policy of continuing improvement in design and performance of our products. The right is therefore reserved to vary specifications without notice.



Fonderie Sime S.p.A • Via Garbo, 27 • 37045 Legnago (Vr) Italy
Tel. +39 0442 631111 • Fax +39 0442 631291 • www.sime.it