
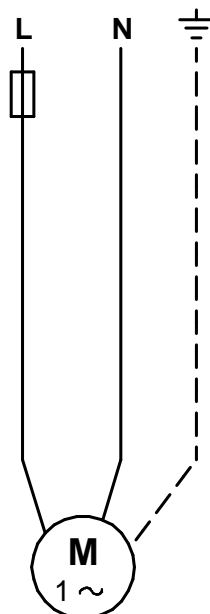
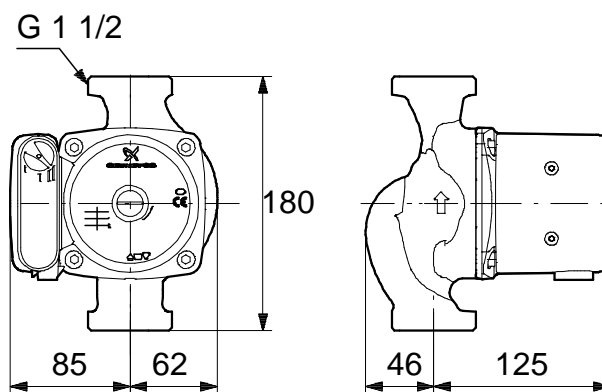
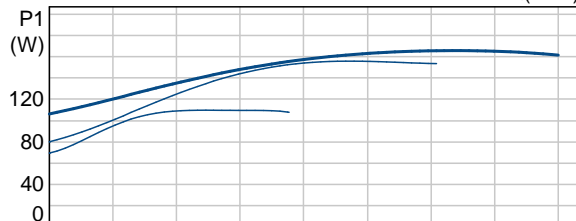
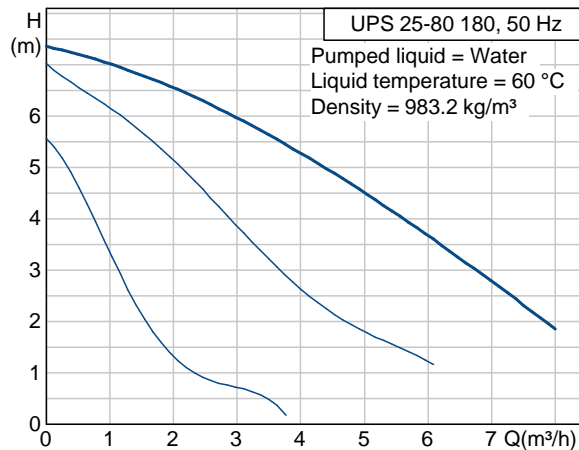
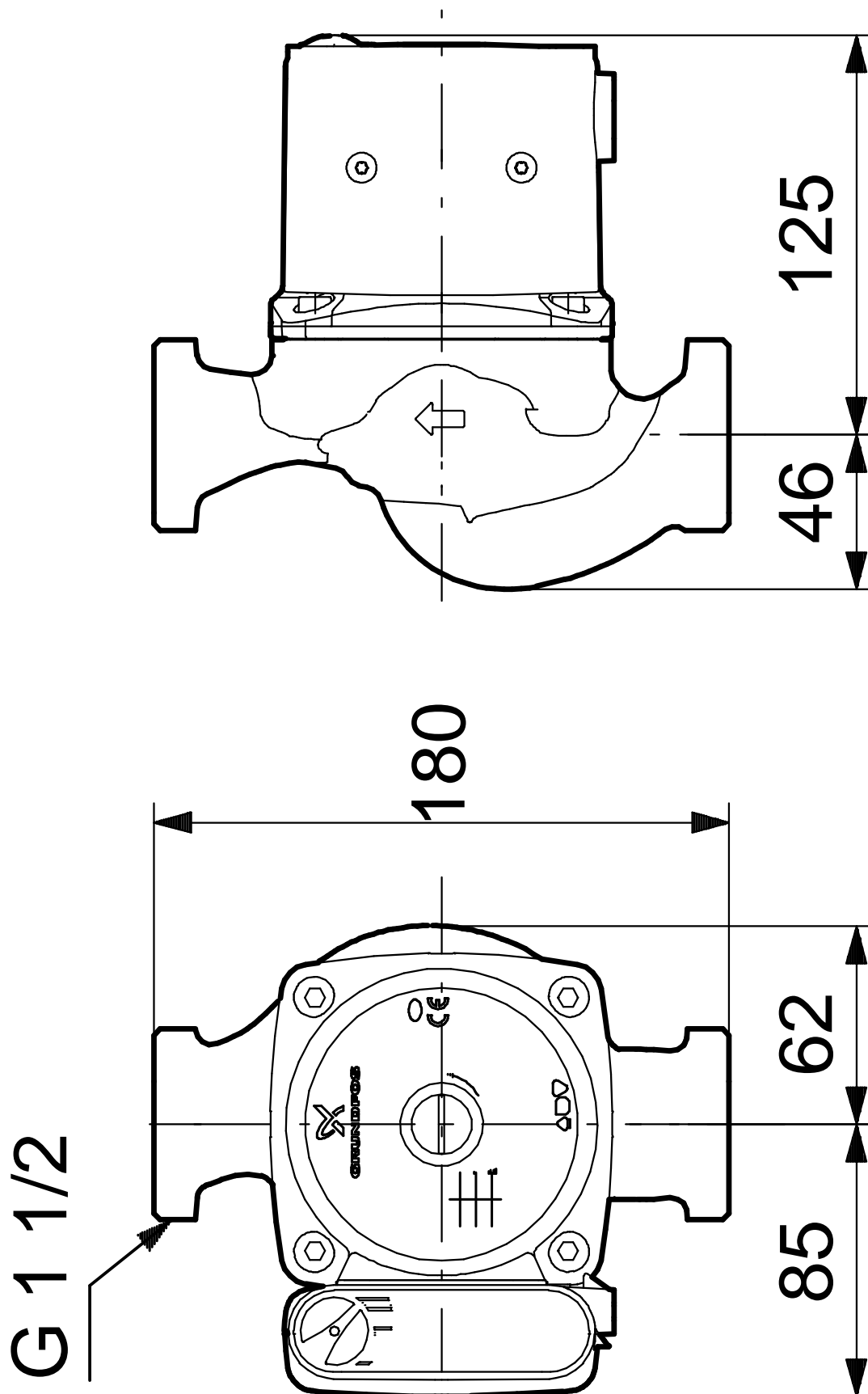


Position	Qty.	Description	Single Price
	1	UPS 25-80 180  <p>Note! Product picture may differ from actual product</p> <p>Product No.: 95906431</p> <p>The pump is of the canned rotor type, i.e. pump and motor form an integral unit without shaft seal and with only two gaskets for sealing. The bearings are lubricated by the pumped liquid. The pump has 3-step speed selector.</p> <p>The pump is characterized by:</p> <ul style="list-style-type: none"> * Ceramic shaft and radial bearings. * Carbon axial bearing. * Stainless steel rotor can and bearing plate. * Corrosion-resistant impeller, Composite, PES/PP. * Cast iron pump housing. <p>The motor is a 1-phase motor. No additional motor protection is required.</p> <p>Liquid:</p> <p>Liquid temperature range: -25 .. 110 °C Liquid temp: 60 °C Density: 983.2 kg/m³</p> <p>Technical:</p> <p>Actual calculated flow: 3.81 m³/h Resulting head of the pump: 5.43 m TF class: 110 Maximum operating pressure: 10 bar</p> <p>Materials:</p> <p>Pump housing: Cast iron EN-JL1030 ASTM 30 B</p> <p>Impeller: Composite, PES/PP</p> <p>Installation:</p> <p>Amb. max at 80 dgr C liquid: 40 °C Maximum operating pressure: 10 bar Pipe connection: G 1 1/2 Pressure stage: PN 10 Port-to-port length: 180 mm</p> <p>Electrical data:</p> <p>Power input in speed 1: 110 W Power input in speed 2: 155 W Max. power input: 165 W Mains frequency: 50 Hz Rated voltage: 1 x 230 V Current in speed 1: 0.5 A Current in speed 2: 0.7 A Current in speed 3: 0.7 A Capacitor size - run: 4 µF Enclosure class (IEC 34-5): 44 Insulation class (IEC 85): F</p>	Price on request

Position	Qty.	Description	Single Price
		Others: Shipping volume: 0.008 m3 Energy label: C	

Description	Value
Product name:	UPS 25-80 180
Product No:	95906431
EAN number:	5700310344584
Technical:	
Speed no:	3
Actual calculated flow:	3.81 m³/h
Resulting head of the pump:	5.43 m
Head max:	80 dm
TF class:	110
Maximum operating pressure	10 bar
Materials:	
Pump housing:	Cast iron EN-JL1030 ASTM 30 B
Impeller:	Composite, PES/PP
Installation:	
Amb. max at 80 dgr C liquid	40 °C
Maximum operating pressure	10 bar
Pipe connection:	G 1 1/2
Pressure stage:	PN 10
Port-to-port length:	180 mm
Liquid:	
Liquid temperature range	-25 .. 110 °C
Liquid temp:	60 °C
Density:	983.2 kg/m³
Electrical data:	
Power input in speed 1:	110 W
Power input in speed 2:	155 W
Max. power input:	165 W
Mains frequency:	50 Hz
Rated voltage:	1 x 230 V
Current in speed 1	0.5 A
Current in speed 2	0.7 A
Current in speed 3	0.7 A
Capacitor size - run	4 µF
Enclosure class (IEC 34-5):	44
Insulation class (IEC 85):	F
Motor protec:	CONTACT
Thermal protec:	internal
Controls:	
Pos term box:	9H
Others:	
Shipping volume:	0.008 m3
Energy label:	C
Country code:	GB





Note! All units are in [mm] unless others are stated.
Disclaimer: This simplified dimensional drawing does not show all details.