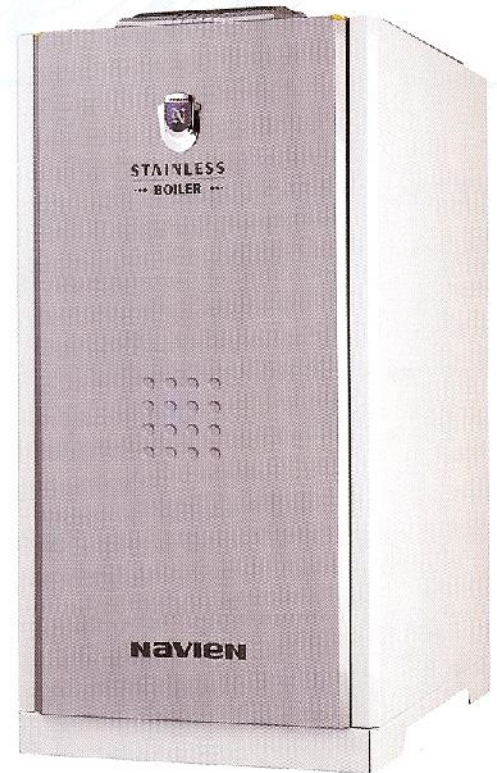


Oil Combi Boiler

NAVIEN Stainless-Steel

FEATURES & BENEFITS

- High Energy Efficiency 90.0 %
- Navien's stainless-steel heat exchanger provides 3.8 to 4 times longer life-expectancy and boasts superior resistance against corrosion and erosion over the copper heat exchangers used in other brands.
- Built-in Pre-heater offers safe and optimal combustion during winter season.
- Ready-to-Connect Outdoor Probe for weather compensation heating is the best approach to gain maximum efficiency.
- Built-in Antifreeze System improves safety operation.
- Noiseless and smooth operation is guaranteed.
- Digital Room Thermostat is available.



Specifications

Model	Navien Oil Stainless-Steel						
Item	Unit	17 K	21 K	24 K	30 K	41 K	58 K
Maximum Heating Output	kW	17.4	21.0	24.0	30.0	41.0	58.1
Maximum DHW Output	kW	17.4	21.0	24.0	30.0	41.0	58.1
Energy Efficiency	%	90.0	90.0	90.0	90.0	90.0	90.0
Dimensions (W x D x H)	mm	320 x 520 x 754	320 x 520 x 754	320 x 520 x 774	320 x 520 x 817	360 x 631 x 856	491 x 767 x 850
Net Weight	kg	36	36	36.5	38.5	52	94

* KD Navien reserves the right to change specifications above at anytime without prior notice.